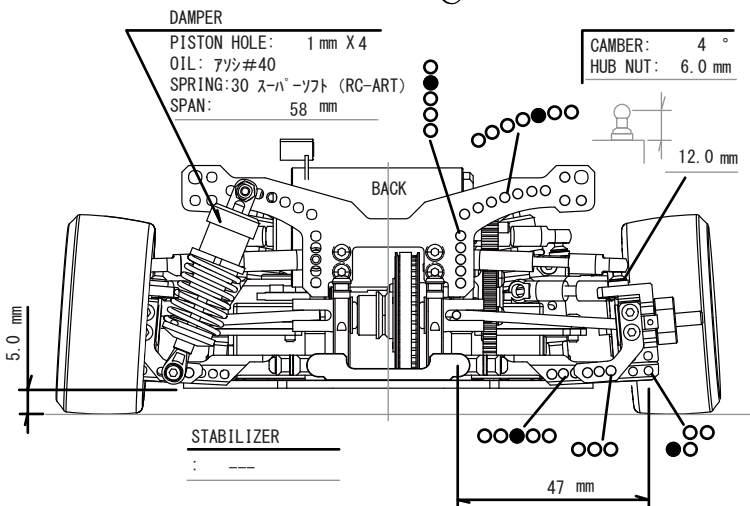
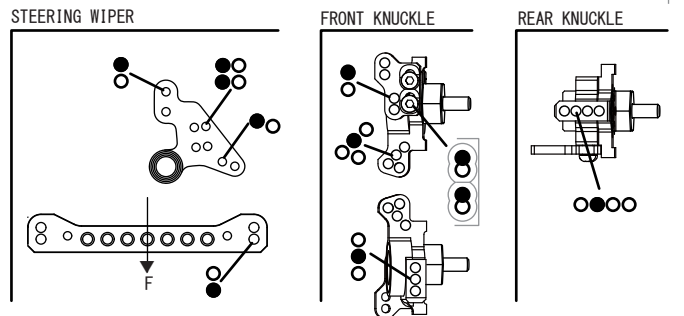
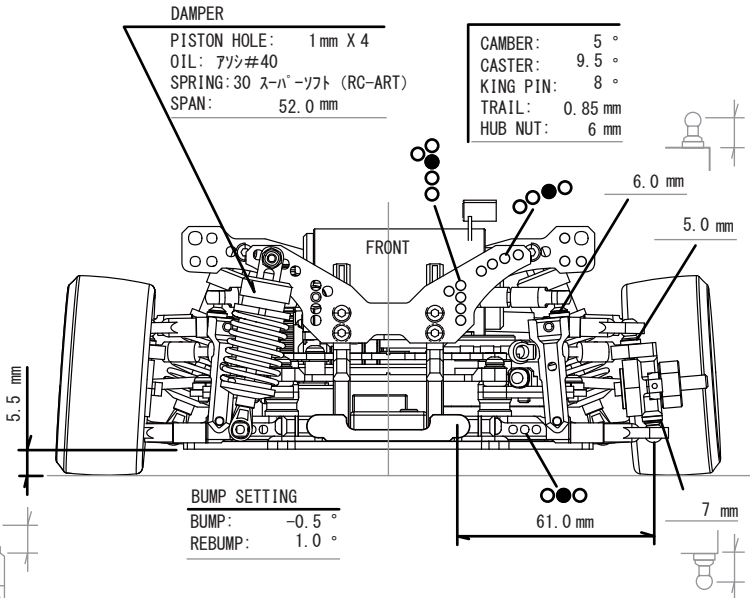
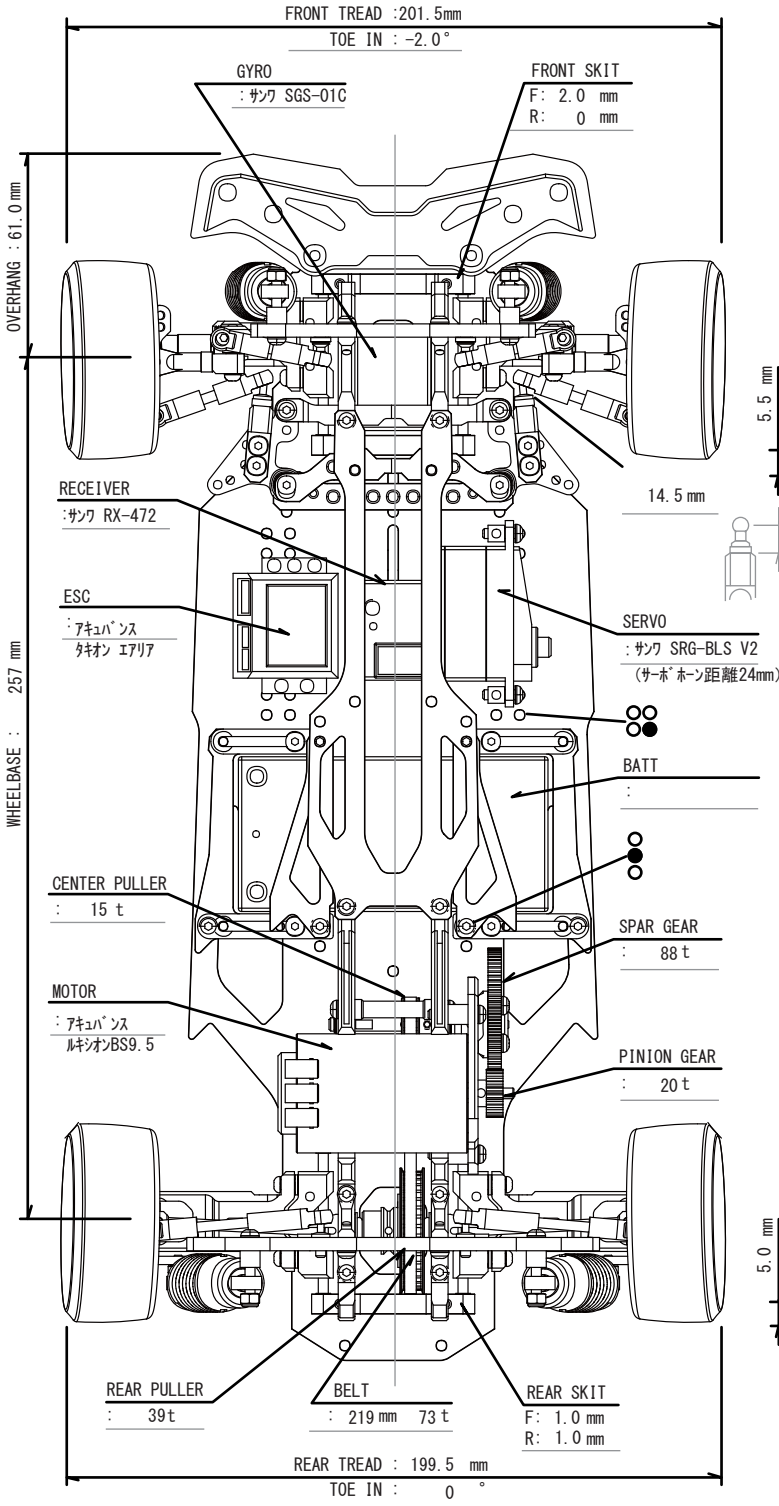


RC-ARTトラックゲート	FRONT LOWR ARM TATSUKEN-ASHI V.2	REAR LOWR ARM TATSUKEN-ASHI V.2	DAMPER RC-ART	TIRE / WHEEL RC-ART
※				スーパーハード
※	FRONT KNUCKLE TATSUKEN-ASHI V.2	REAR KNUCKLE TATSUKEN-ASHI V.2	WEIGHT F: 594 g R: 700 g TOTAL: 1294 g	OFFSET F: +6 mm R: +8 mm



GYRO GAIN : 100 %	FINAL GEAR RATIO : 11.44	BELT TENSION : MAX ●	BALANCER WEIGHT : 8 g (サスマウント後ろ)
-------------------	--------------------------	------------------------	----------------------------------

PROPO SETTING サンワ M12

ST	HT	AUX1	AUX2
D/R ST 50%	CUREVEH EXP RATE +2%	EPA LOW 100%	
EPA LEFT 60%			
EPA RIGHT 60%			

ESC SETTING タキオン エアリア

DriveFrp : 16khz	BstTim : 35deg
NeuBrkFrp : 4khz	BstStRp : 4000rpm
BrakeFrp : 8khz	BstEndRp : 43000rpm
InitialSpeed : 0khz	TrbTim : 0deg
NeuBrake : 26%	
InitialBrake : 24%	